



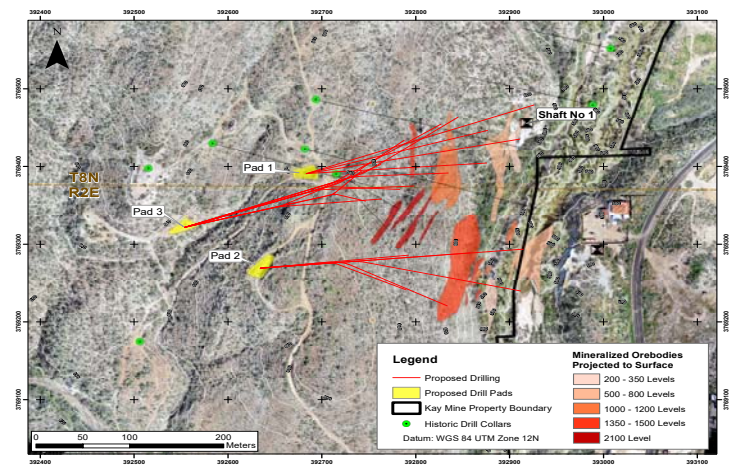
Working with the Community on Advancing the old Kay Mine

Who Are We?

- Arizona Metals Corp is a Canadian gold and copper exploration company listed on the OTCQX under the symbol "AZMCF"
- We have 2 projects in Arizona and are spending money to advance these projects, working hard to provide value to, and to operate with, the cooperation of local communities

What are We Doing?

- In early 2021 we re-started an exploration drilling program at the past-producing Kay Mine which produced mineralization from its underground workings during the 1920s and 1950s and was later explored by Exxon Minerals from 1972 to 1984.



Aerial view of proposed Kay Mine drill holes and pads

- We are drilling holes from surface to try and outline the size of the mineralization identified by Exxon. Each hole will have a diameter of 4 inches and on closure will be sealed and capped according to ADWR regulations

What are We Hoping to Do?

- We are only conducting exploration drilling at this point and this is not, and may never be, an active mining operation
- We are targeting an underground deposit with minimal surface disruption, and NOT a surface open pit operation.
- If we are successful in our exploration efforts and economic studies, we will carefully advance the project towards an ultimate active mining operation; but again, resulting in no open pits.

How Does this Affect your Communities?

- All activities are being conducted to the highest standards in coordination with all state and federal regulations, including under the Bureau of Land Management and the Arizona Department of Water Resources Regulations
- We have posted a reclamation bond prior to any drilling
- Exploration drilling does not use ANY harmful chemicals and drill water is acquired ONLY from private wells
- We are striving to be the best community partners possible, including through the improvements of roads and trails, and in the future the creation of hundreds of high paying jobs should the operation ultimately move forward, and only then with all required permits
- All these steps will take years and will be done in close consultation with and input from all interested parties, including the local communities



Drill rig located on Pad 1 at Kay Mine Claims

For additional information, please contact the CEO at:

safety@arizonametalscorp.com

www.arizonametalscorp.com

<https://arizonametalscorp.com/kay-mine/vtem-survey/>